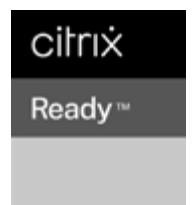
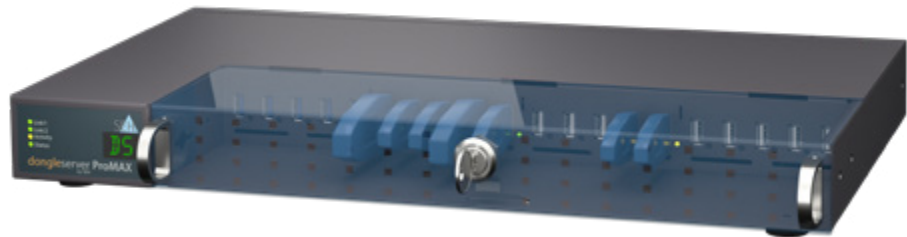


# ACCESSING DONGLES VIA THE NETWORK

## Dongle Servers by SEH Computertechnik GmbH

**dongleserver**  
by SEH

Made  
in  
Germany



## More Freedom When Using Dongles

### What is a „Dongle Server“?

**Dongle servers embed USB dongles into your network—the fast and easy way! You still use your copy-protected software as usual but you don't have to connect the dongles directly to your client. This lets you work with flexibility and independent of location or USB cable lengths!**

The SEH dongle servers are plug&play devices: You connect them to your network, and the USB dongles to their USB ports. Then you just have to establish a virtual USB connection between USB dongle and client using the UTN (UTN = USB to Network) functionality and the corresponding software tool 'SEH UTN Manager'. Now you can use the USB dongle as if it were connected locally.

Need-to-know: The working principle of USB dongles as copy-right protection is not changed, bypassed or eliminated at any time. For it is a 1:1 connection. You are always on the safe side!

**SEH dongle servers are ideal for server-based environments (Citrix Virtual Apps, Microsoft Remote Desktop Services/Terminal Services) and virtualized environments (VMware, Citrix Hypervisor, Microsoft Hyper-V).**

#### ...And Why Do You Need One?

- › So that you **never have to search for your dongles again.**
- › So that you **never have to unplug and replug again.**
- › To **protect your dongles against theft, damage, and loss.**
- › So that you can always see if someone else is currently using the dongle you need or if you can **use it right now.**
- › So that you can easily access your dongles from anywhere in the network, **even via the Internet, VPN, or VLAN.**
- › So that you **add value to your dongles with added features:** increased security, dongle user management, and much more.
- › To **use your dongles effectively as possible,** resulting in a decrease in required Licenses and lower acquisition costs.

**In other words: So that your working with dongles is state-of-the-art and uncomplicated!**



## Using Dongles via LAN, VPN, VLAN and the Internet

### Accessing and Administering Dongles over a Network – Even via the Internet!

#### A dongle server is the right choice for...

##### ...service providers that manage copy-protected software for various customers:

You can manage the dongles individually and completely separated for each customer!

##### ...developers of copy-protected software:

You can send test samples of your software to potential customers without having to send a dongle. The dongle stays with you, the customer accesses it via the network.

This way you are always in control of your license dongle!

##### ...companies that have employees working in the field and/or many external sides and subsidiaries:

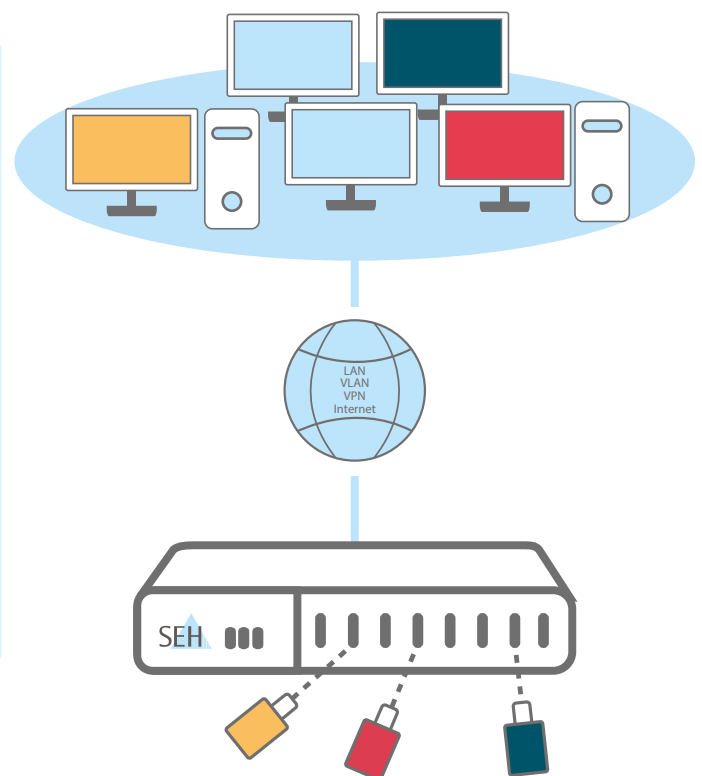
The valuable dongles are kept safe in a central location. Your employees can work with them easily nonetheless—no matter whether they are with a customer or in a subsidiary! Dongle servers make all dongles available and provide direct access via LAN, Internet, and VPN.

**Conclusion: Dongle servers are an excellent choice not only for companies but also for authorities, educational institutions, research and development centers, institutions, and many more!**

#### Using Dongles via LAN, VPN, VLAN and the Internet

With the dongle servers from SEH, dongles cannot only be used via LAN connections but also via VPN, VLAN, and the Internet. This allows for access from the most diverse environments—the potential application scenarios are endless!

Profit from the standard scenarios below or from a solution adapted specifically to your needs.



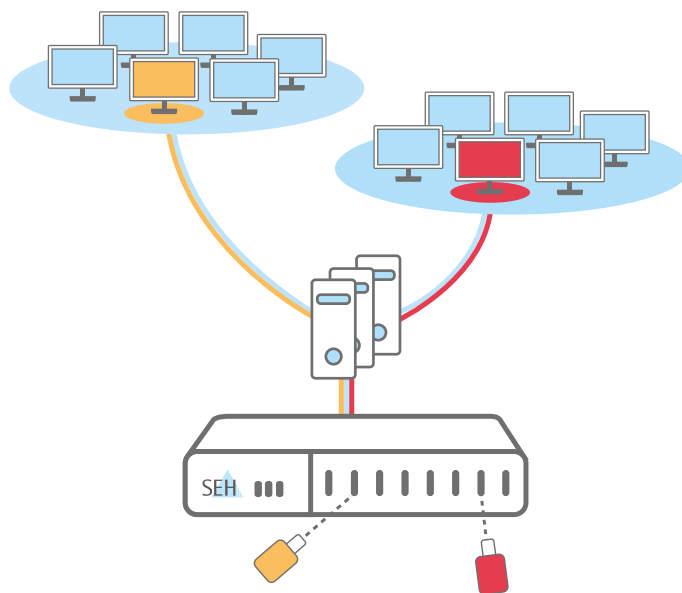
*Dongle servers provide an exclusive point-to-point connection via the network. The working principle of USB dongles as copyright protection is not changed, bypassed or eliminated at any time.*

## Versatile Application

# Using Hardware Dongles in Virtualized and Server-based Environments It's Not Only Possible but Easy as Well!

A dongle server provides freedom from USB ports in virtualized and server-based environments (such as solutions from Microsoft, Citrix, or VMWare).

You can always access your dongles easily and securely via the network while they are kept safe in a central management location (e.g. the server room).



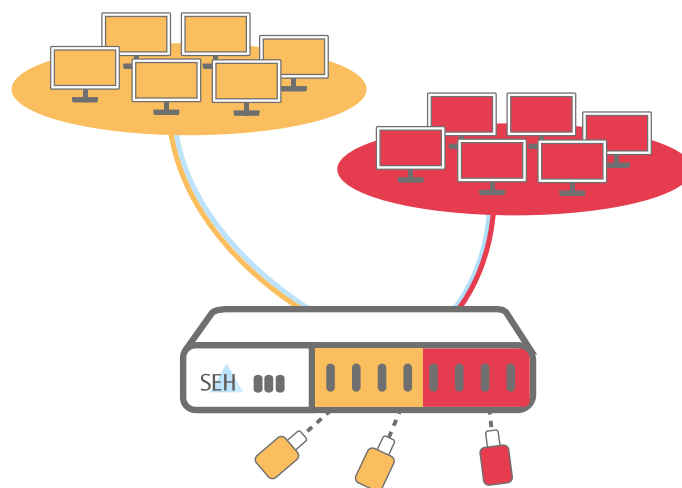
*Making dongles available in virtual and server-based environments.*

## Dongle Management: Managing Access Rights

Two keys with individually definable validity can be assigned to each dongle server USB port. Only users who know the key can use the connected device during the times defined. With these port keys, dongles can be assigned to specific user (groups) for a defined period of time. This way, dongle use is automatically restricted, for example to

- › a certain period of time, specified in days (for demos, accounting statements)
- › specific hours of the day (dongle usage only during working hours)
- › selected applications for specific user groups such as demos or, accounting, or project software.

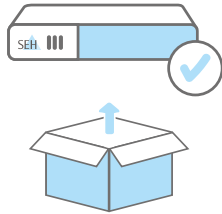
This feature provides new freedom in dongle usage for companies as well as SaaS providers.



*Extensive dongle user management*

## Features

### Plug & Play



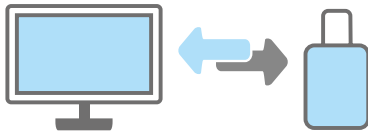
Simply connect the dongle server to the network, plug in the dongles, install the software tool "SEH UTN Manager" and you're ready to go!

### Extensive Monitoring



Everything happening at the dongle server and its status can be monitored and logged with a date-time-stamp.

### Automated Connections



Connections to dongles can be established automatically when the system starts, they can have a time out, or be managed in the background (without the using knowing it).

### Central Analysis



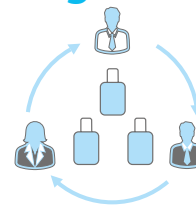
All logged data is saved locally on the dongle servers and can also be sent automatically to a syslog-ng or WebDAV server for analysis.

### Strong Security Features



The dongle servers come with an extensive list of security functions: Connection encryption, dongle-port-marriage, certificate management, authentication (802.1X), port access control, and much more! Thanks to all these features, they can be perfectly embedded into any secured environment.

### Dongle Pooling



With the dongle pooling function, the next available dongle is served automatically if you have connected several identical dongles to one dongle server.

## Technical Data

# dongleserver Pro

The dongleserver Pro provides secure and reliable access to software license dongles via a network. It has 4 USB 3.0 SuperSpeed and 4 USB 2.0 Hi-Speed ports. The handy version of the dongle server has been designed for use in office environments. The lockable housing keeps your valuable USB dongles

safe in accessible areas. With the optional Rack Mount Kit, the dongle server can be installed in the server room as well.

## Application Scenarios

- › Small to medium-sized companies
- › Offices
- › Law firms
- › Agencies
- › Small service providers (IT, accounting, insurance etc.)
- › Educational institutions such as universities and schools
- › Scientific institutions such as research facilities



## Features

- › 4 x USB 3.0 SuperSpeed ports
- › 4 x USB 2.0 Hi-Speed port
- › Gigabit Ethernet
- › For Microsoft Windows, Linux, OS X/mac OS
- › Comprehensive security package: Connection encryption, dongle-port marriage, time-based ports keys, certificate management, authentication (802.1X), port access control, and much more!
- › Monitoring and logging with connection to monitoring server services
- › Regular software updates
- › Technical support worldwide for free
- › Optional Rack Mount Kit (RMK 4) for installation in a server rack and comfortable access

## Recommended by



## Technical Data

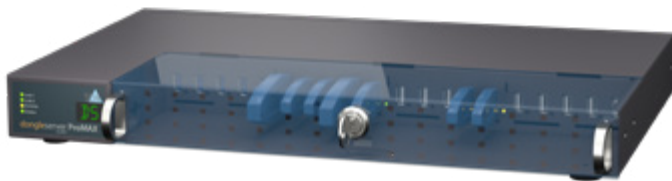
# dongleserver ProMAX

The dongleserver ProMAX is the big version for server rooms and provides access to software license dongles via a network. Compared to the smaller dongleserver Pro, the dongleserver ProMAX offers additional reliability and redundancy with two built-in power supplies and two network connections. In addition, the parameters, passwords, and certificates are automat-

ically backed up to an integrated SD card. The dongle server is also equipped with a multi-segment status and fault display for information at a glance. The optional telescopic slides (Rack Mount Kit 3) facilitate device access in the server room.

## Application Scenarios

- › Big companies
- › SaaS service providers
- › Cloud service providers
- › System houses
- › Big service providers (IT, accounting, insurance etc.)



## Features

- › 5 x USB 3.0 SuperSpeed ports  
15 x USB 2.0 Hi-Speed ports
- › Gigabit Ethernet
- › 2 network connectors
- › 2 power packs
- › Status display and acoustic warnings
- › SD card for automatic configuration backup and transfer to other devices
- › For Microsoft Windows, Linux, OS X/mac OS
- › Comprehensive security package: Connection encryption, dongle-port marriage, time-based ports keys, certificate management, authentication (802.1X), port access control, and much more!
- › Monitoring and logging with connection to monitoring server services
- › Regular software updates
- › Technical support worldwide for free
- › Optional Rack Mount Kit (RMK 3) for optimal installation in a server rack and comfortable access through telescopic slides



# Service<sup>plus</sup>

## Guarantee Extension and Advance Replacement

### Benefits:

- › Manufacturer's guarantee extension from 3 to 5 years
- › Advance hardware replacement in case of a device defect



■ Made  
■ in  
■ Germany

**SEH Computertechnik GmbH**

Suedring 11 | 33647 Bielefeld | Germany  
Phone: +49 (0) 521 94226-29 | Fax: +49 (0) 521 94226-99  
Support: +49 (0) 521 94226-44  
Email: [info@seh.de](mailto:info@seh.de) | Web: [www.seh.de](http://www.seh.de)