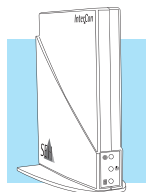
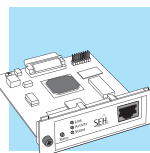


Quick Installation Guide



Content

en

- Information about a Fast Operational Readiness..... 3
 - Printing in Windows..... 3
 - Printing in Mac OS X..... 4
- Information about the Assignment of IP Addresses 5
- Information about the Print Server Administration ... 6

Information about further printing methods in other operating systems as well as additional information about the print server administration can be found in the User Manual.

Inhalt

de

- Information zur schnellen Funktionsbereitschaft..... 7
 - Drucken unter Windows 7
 - Drucken unter Mac OS X 8
- Information zur Vergabe der IP-Adresse..... 9
- Information zur Printserver Administration 10

Informationen zu weiteren Druckmethoden unter anderen Betriebssystemen sowie weiterführende Informationen zur Administration des Printservers erhalten Sie in der Benutzerdokumentation.

Contenu

fr

- Informations sur un fonctionnement rapide 11
 - Imprimer sous Windows..... 11
 - Imprimer sous Mac OS X..... 12
- Informations sur l'attribution des adresses IP 13
- Informations sur l'administration du serveur d'impression 14

Informations sur d'autres méthodes d'impression sous les systèmes d'exploitation différents ainsi que des informations sur l'administration du serveur d'impression se trouvent dans le Manuel d'utilisation.

Contenido

es

- Información acerca de la disposición rápida de funciones .. 15
 - Impresión en Windows 15
 - Impresión en Mac OS X..... 16
- Informaciones acerca de la adjudicación de la dirección IP .. 17
- Informaciones acerca de la administración del servidor de impresión 18

En la documentación del usuario encontrará información acerca de otros métodos de impresión con otros sistemas operativos, así como información acerca de la administración del servidor de impresión.

Contenuto

it

- Informazioni sulla funzionalità veloce 19
 - Stampare in Windows 19
 - Stampare in Mac OS X 20
- Informazioni sull'assegnazione dell'indirizzo IP.... 21
- Informazioni sull'amministrazione del server di stampa 22

Informazioni su altri metodi di stampa con diversi sistemi operativi e approfondimenti sull'amministrazione del server di stampa sono disponibili nella documentazione per l'utente.

Conteúdo

pt

- Informações para obter rapidamente a operacionalidade .23
 - Imprimir em Windows 23
 - Imprimir em Mac OS X 24
- Informações sobre a atribuição do endereço IP 25
- Informações acerca da administração do servidor de impressão 26

Na documentação do utilizador pode consultar informações sobre outros métodos de impressão com outros sistemas operativos, assim como informações mais detalhadas acerca da administração do servidor de impressão.

Document

Type: Quick Installation Guide

Title: Print Server – PS Series

Version: 1.2

Order number: MHAB-QI-IV-SEH

© 2010 SEH Computertechnik GmbH

InterCon is a registered trademark of SEH Computertechnik GmbH.

All trademarks, registered trademarks, logos and product names are property of their respective owners.

Keep the documentation for further reference during the life cycle of the product. SEH Computertechnik GmbH has endeavoured to

ensure that the information in all manuals is correct. If you detect any inaccuracies please inform us at the address indicated below.

SEH Computertechnik GmbH will not accept any liability for any error or omission. The information in this manual is subject to change

without notification. All rights are reserved. Copying, other reproduction or translation without the prior written consent from SEH

Computertechnik GmbH is prohibited.

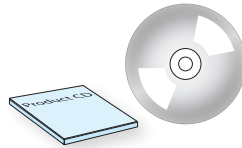
Information about a Fast Operational Readiness – Printing in Windows –



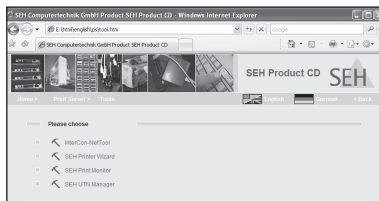
Print server and client must be in the same local network segment.



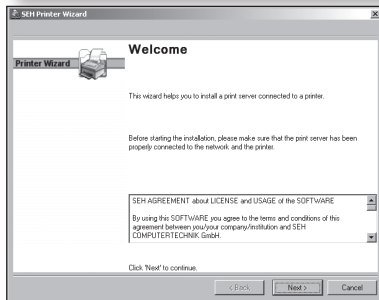
1 Read and observe the safety regulations and carry out the hardware installation, see: *Hardware Installation Guide*.



2 Start the *Product CD* on the Windows client.



3 Select the *Print Server – Tools* menu.

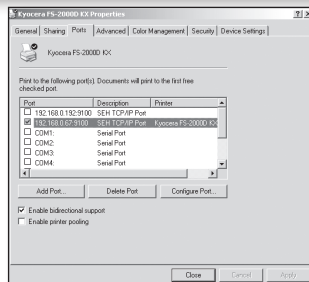


4 Start the *SEH Printer Wizard*.

Follow the instructions of the *SEH Printer Wizard*.




The SEH Printer Wizard supports 32-bit systems. If you want to install the print server on a 64-bit system, use the Windows default printer installation. Contact the manufacturer of your operating system for further information.



► Printer and print server will be created on the Windows client and displayed in the Printer Properties dialog. The operational readiness will be established.

Information about a Fast Operational Readiness – Printing in Mac OS X –

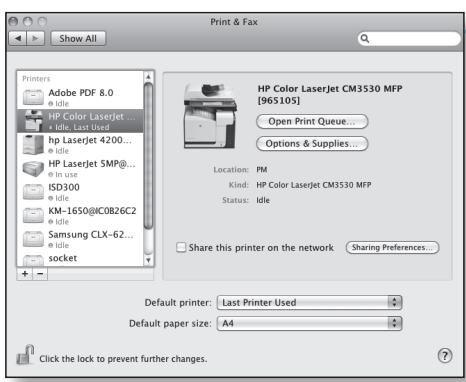
 Print server and client must be in the same local network segment.



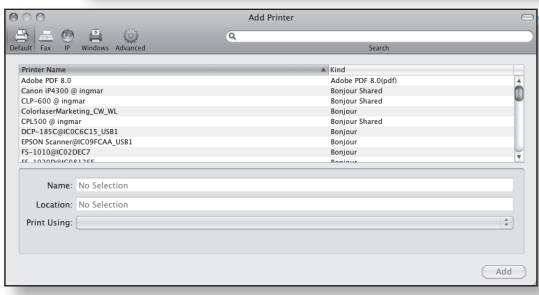
1 Read and observe the safety regulations and carry out the hardware installation, see: *Hardware Installation Guide*.



2 Start *Print & Fax* on the Mac client.




3 Click 



4 Select the printer/print server from the list.

Define a name, location, and printer driver.

Click *Add*.

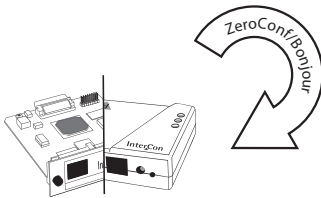
 Define the Installable Options (if required).

▶ Printer and print server will be created on the Mac client and displayed in the list. The operational readiness will be established.

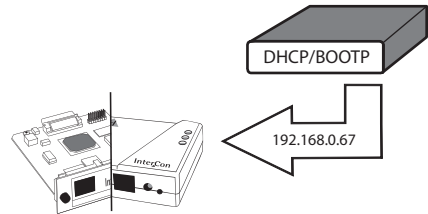
Information about the Assignment of IP Addresses

SEH print servers are shipped without an IP address. When you install the print server for the first time, the print server checks whether an IP address can be obtained from the boot protocols BOOTP or DHCP. If this is not the case, the print server assigns itself an IP address via ZeroConf from the address range (169.254.0.0/16) which is reserved for ZeroConf. A freely definable IP address can be saved manually in the print server, if necessary.

Automatic Assignment of IP Addresses

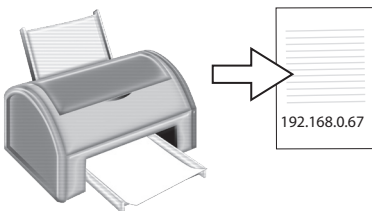


The print server assigns itself an IP address via ZeroConf from the address range 169.254.0.0/16.



If the boot protocols have been enabled (factory default setting) and a DHCP server is available in the network, the print server obtains its IP address via the DHCP server.

Displaying the IP Address



The IP address can be found on the status page of the print server.

To print a status page, press the status button of the print server.

Manual Assignment of IP Addresses

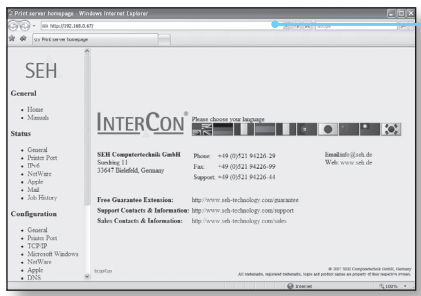
- 1 Start the *Product CD* on the client.
- 2 Select the *Print Server – Tools* menu.
- 3 Install the *InterCon-NetTool* on the client. Start the installation routine.
- 4 Start the *InterCon-NetTool* on the client.
- 5 Mark the print server in the print server list and start the *IP Wizard*.
- 6 Follow the instructions of the *IP Wizard*. Enter the preferred IP address and save it.

Information about the Print Server Administration



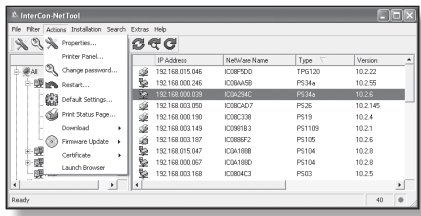
Administration via the Print Server Homepage

- 1 Start the browser software on the client.
- 2 Enter the IP address of the print server as URL.
- 3 The *Print Server Homepage* is displayed. Carry out the desired action.



Administration via the InterCon-NetTool

- 1 Start the *Product CD* on the client.
- 2 Select the *Print Server – Tools* menu.
- 3 Install the *InterCon-NetTool* on the client. Start the installation routine.
- 4 Start the *InterCon-NetTool* on the client.
- 5 Mark the print server in the print server list and carry out the desired action.



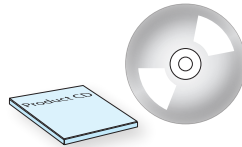
Information zur schnellen Funktionsbereitschaft – Drucken unter Windows



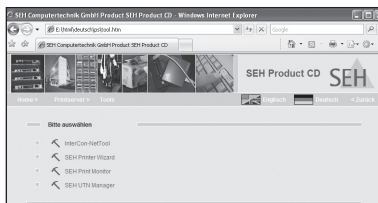
Printserver und Client müssen sich im selben lokalen Netzwerk befinden.



1 Nehmen Sie die Sicherheitshinweise zur Kenntnis und führen Sie die Hardwareinstallation aus; siehe *Hardware Installation Guide*.



2 Starten Sie die *Product CD* auf dem Windows Client.



3 Wählen Sie das Menü *Printserver* – *Tools* aus.

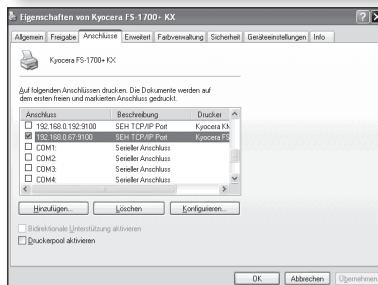


4 Starten Sie den *SEH Printer Wizard*.

Folgen Sie den Anweisungen des *SEH Printer Wizards*.



Der SEH Printer Wizard unterstützt 32-Bit Systeme. Soll der Printserver auf einem 64-Bit System installiert werden, verwenden Sie die Windows Standard Druckerinstallation. Informationen hierzu liefert Ihr Betriebssystemhersteller.



► Drucker und Printserver werden als Druckobjekt auf dem Windows Client angelegt und im Dialog Druckereigenschaften angezeigt. Die Funktionsbereitschaft ist hergestellt.

Information zur schnellen Funktionsbereitschaft – Drucken unter Mac OS X –



Printserver und Client müssen sich im selben lokalen Netzwerksegment befinden.



1 Nehmen Sie die Sicherheitshinweise zur Kenntnis und führen Sie die Hardwareinstallation aus; siehe *Hardware Installation Guide*.

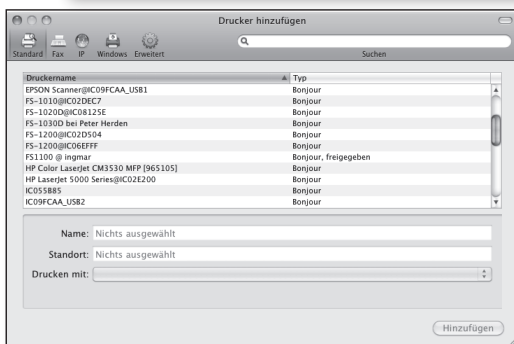


Drucker & Fax

2 Starten Sie *Drucker & Fax* auf dem Mac Client.



3 Wählen Sie .



4 Markieren Sie den Drucker/Printserver in der Liste.

Definieren Sie Name, Standort und Druckertreiber.

Wählen Sie die Schaltfläche *Hinzufügen* an.



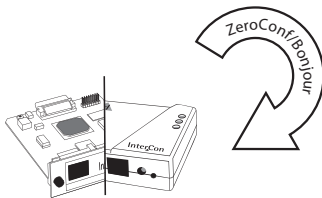
Definieren Sie bei Bedarf verschiedene Installationsoptionen.

► Drucker und Printserver werden auf dem Mac Client angelegt und in der Liste angezeigt. Die Funktionsbereitschaft ist hergestellt.

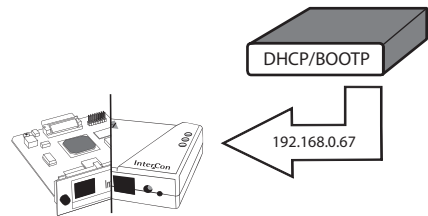
Informationen zur Vergabe der IP-Adresse

SEH Printserver werden ohne IP-Adresse ausgeliefert. Der Printserver überprüft bei der Erstinstallation, ob er eine IP-Adresse über die Bootprotokolle BOOTP oder DHCP erhält. Ist das nicht der Fall, gibt sich der Printserver über ZeroConf selbst eine IP-Adresse aus dem für ZeroConf reservierten Adressbereich (169.254.0.0/16). Bei Bedarf kann manuell eine frei definierbare IP-Adresse im Printserver gespeichert werden.

Automatische Vergabe der IP-Adresse

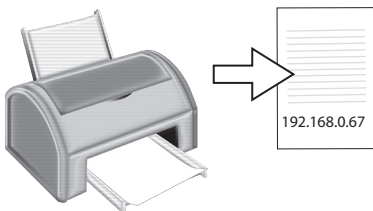


Der Printserver gibt sich über ZeroConf selbst eine IP-Adresse aus dem Adressbereich 169.254.0.0/16.



Sind die Bootprotokolle aktiviert (Werkseinstellung) und ist im Netzwerk ein DHCP Server vorhanden, erhält der Printserver seine IP-Adresse über den DHCP Server.

IP-Adresse einsehen



Die IP-Adresse kann auf der Statusseite des Printservers eingesehen werden.

Zum Drucken einer Statusseite betätigen Sie den Statustaster am Printserver.

Manuelle Vergabe der IP-Adresse

- 1 Starten Sie die *Product CD* auf dem Client.
- 2 Wählen Sie das Menü *Printserver – Tools* aus.
- 3 Installieren Sie das *InterCon-NetTool* auf dem Client. Starten Sie die Installationsroutine.
- 4 Starten Sie das *InterCon-NetTool* auf dem Client.
- 5 Markieren Sie den Printserver in der Liste und starten Sie den *IP-Assistenten*.
- 6 Folgen Sie dem *IP-Assistenten*. Geben Sie die bevorzugte IP-Adresse ein und speichern Sie diese.

Informationen zur Printserver-Administration



Internet Explorer.exe

Safari.app

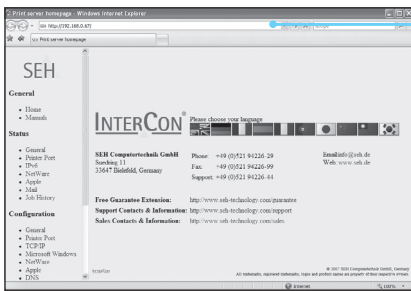
Firefox.exe

Administration via Printserver Homepage

1 Starten Sie die Browser Software auf dem Client.

2 Geben Sie die Printserver IP-Adresse als URL ein.

3 Die *Printserver Homepage* wird angezeigt. Führen Sie die gewünschte Aktion aus.



Administration via InterCon-NetTool

1 Starten Sie die *Product CD* auf dem Client.

2 Wählen Sie das Menü *Printserver – Tools* aus.

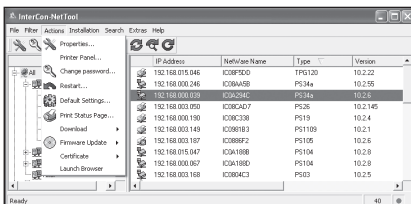
3 Installieren Sie das *InterCon-NetTool* auf dem Client. Starten Sie die Installationsroutine.

4 Starten Sie das *InterCon-NetTool* auf dem Client.

5 Markieren Sie den Printserver in der Liste und führen Sie die gewünschte Aktion aus.



InterCon-NetTool.exe



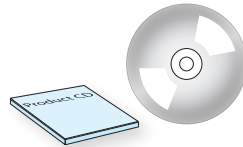
Informations sur un fonctionnement rapide – Imprimer sous Windows –



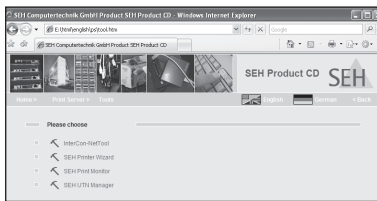
Il faut que le serveur d'impression et le client se trouvent dans le même segment local.



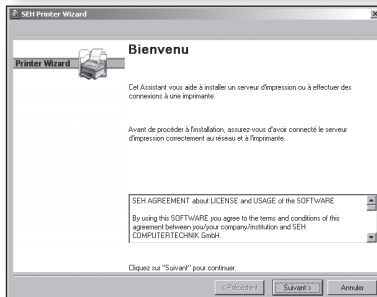
1 Veuillez lire et suivre les conseils de sécurité et exécutez l'installation du matériel, voir: *Hardware Installation Guide*.



2 Démarrez le *Product CD* sur le client Windows.



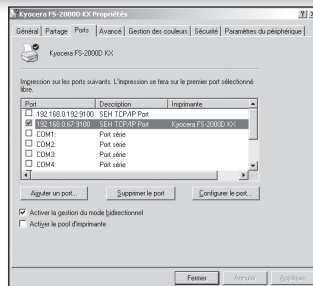
3 Sélectionnez le menu *Print Server – Tools*.



4 Lancez l'*Assistant d'imprimante (SEH Printer Wizard)*.
Suivez les instructions de l'*Assistant d'imprimante*.



Le SEH Printer Wizard prend en charge des systèmes 32 bits. Si vous voulez installer le serveur d'impression dans un système 64 bits, utilisez l'installation de l'imprimante par défaut de Windows. Contactez le fabricant de votre système d'exploitation pour obtenir plus d'information.



► L'imprimante et le serveur d'impression seront créés comme objet d'impression sur le client Windows et affichés dans le dialogue Propriétés de l'imprimante. Le fonctionnement est établi.

Informations sur un fonctionnement rapide – Imprimer sous Mac OS X –



Il faut que le serveur d'impression et le client se trouvent dans le même segment local.

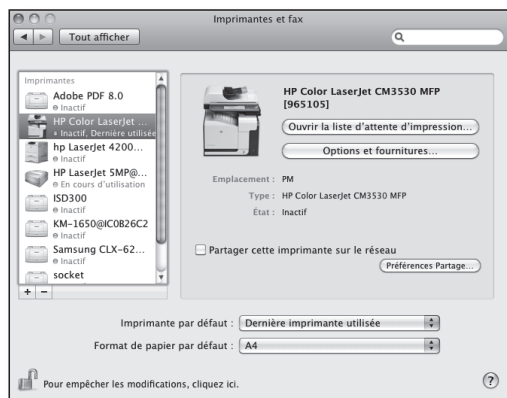


1 Veuillez lire et suivre les conseils de sécurité et exécutez l'installation du matériel, voir: *Hardware Installation Guide*.

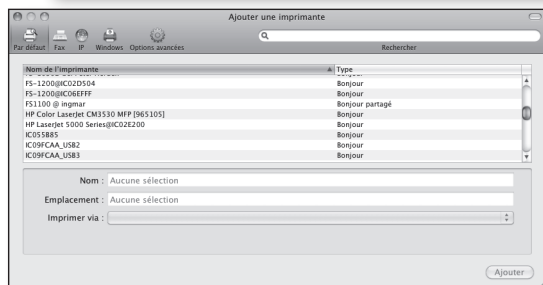


Imprimantes et fax

2 Demarrez *Imprimantes et fax* sur le client Mac.



3 Cliquez **+**



4 Sélectionnez l'imprimante/le serveur d'impression dans la liste.

Choisissez un nom, un emplacement et un pilote d'imprimante.

Cliquez sur *Ajouter*.



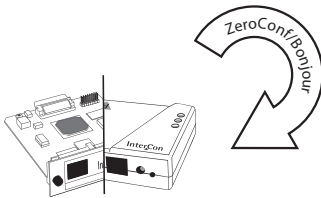
Définissez les Options installables (si nécessaire).

► L'imprimante et le serveur d'impression seront créés sur le client Mac et affichés dans la liste. Le fonctionnement est établi.

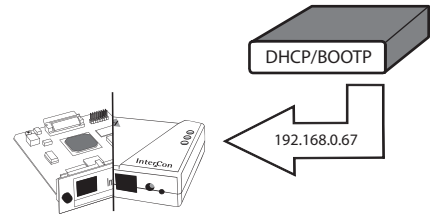
Informations sur l'attribution des adresses IP

Les serveurs d'impression SEH sont livrés sans adresse IP. Quand le serveur d'impression est installé pour la première fois, le serveur d'impression essaie d'obtenir une adresse IP à l'aide des protocoles boot BOOTP ou DHCP. Si cela ne fonctionne pas, le serveur d'impression obtient son adresse IP par ZeroConf dans l'intervalle d'adresses 169.254.0.0/16. Une adresse IP peut être enregistrée manuellement dans le serveur d'impression, si nécessaire.

Attribution automatique des adresses IP

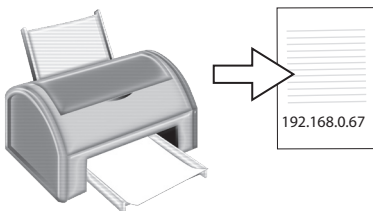


Le serveur d'impression obtient son adresse IP par ZeroConf dans l'intervalle d'adresses 169.254.0.0/16.



Si les protocoles boot sont activés (configuration par défaut) et un serveur DHCP est présent dans le réseau, le serveur d'impression obtient son adresse IP à l'aide d'un serveur DHCP.

Voir l'adresse IP



L'adresse IP se trouve sur la page d'état du serveur d'impression.

Pour imprimer une page d'état, appuyez sur la touche d'état du serveur d'impression.

Attribution manuelle des adresses IP

- 1 Démarrez le *Product CD* sur le client.
- 2 Sélectionnez le menu *Print Server – Tools*.
- 3 Installez l'*InterCon-NetTool* sur le client. Lancez la routine d'installation.
- 4 Lancez l'*InterCon-NetTool* sur le client.
- 5 Sélectionnez le serveur d'impression dans la liste et lancez l'*Assistant IP*.
- 6 Suivez les instructions de l'*Assistant IP*. Entrez l'adresse IP préférée et enregistrez l'adresse.

Informations sur l'administration du serveur d'impression



Internet Explorer.exe



Safari.app



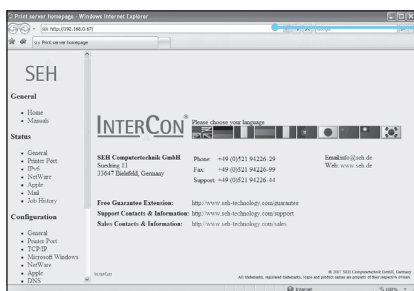
Firefox.exe

Administration par la Homepage du serveur d'impression

1 Lancez le logiciel du navigateur Web sur le client.

2 Entrez l'adresse IP du serveur d'impression comme URL.

3 La Homepage du serveur d'impression est affichée. Exécutez l'action désirée.



Administration par l'InterCon-NetTool

1 Démarrez le *Product CD* sur le client.

2 Sélectionnez le menu *Print Server – Tools*.

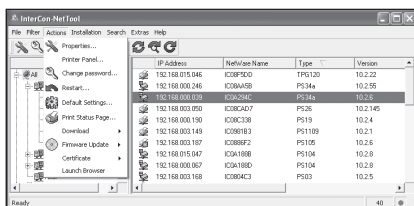
3 Installez *l'InterCon-NetTool* sur le client. Lancez la routine d'installation.

4 Lancez *l'InterCon-NetTool* sur le client.

5 Sélectionnez le serveur d'impression dans la liste et exécutez l'action désirée.



InterCon-NetTool.exe



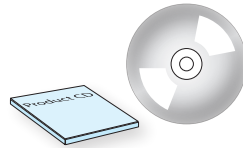
Información acerca de la disposición rápida de funciones – Impresión en Windows –



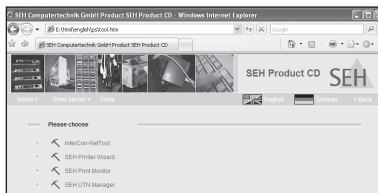
El servidor de impresión y el cliente deben encontrarse en el mismo segmento de red local.



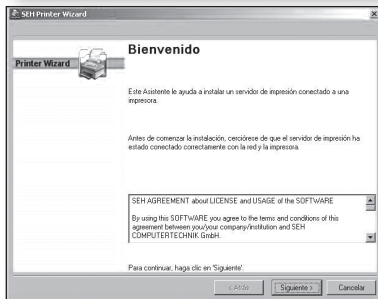
1 Lea y siga las precauciones y ejecute la instalación de hardware, vea: *Hardware Installation Guide*.



2 Inicie el *Product CD* en el cliente Windows.



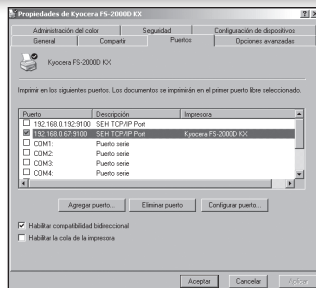
3 Elija el menú *Print Server – Tools*.



4 Arranque el *Asistente de la impresora (SEH Printer Wizard)*.
Sigue las instrucciones del *Asistente de la impresora*.




El SEH Printer Wizard admite sistemas de 32 bits. Si desea instalar el servidor de impresión en un sistema de 64 bits, utilice la instalación de impresora predeterminada de Windows. Póngase en contacto con el fabricante de su sistema operativo para obtener más información.



► La impresora y el servidor de impresión se crearán como objeto de impresión en el cliente Windows y se mostrarán en el cuadro de diálogo de Propiedades de impresora. Así estarán disponibles las funciones.

Información acerca de la disposición rápida de funciones – Impresión en Mac OS X –

 El servidor de impresión y el cliente deben encontrarse en el mismo segmento de red local.

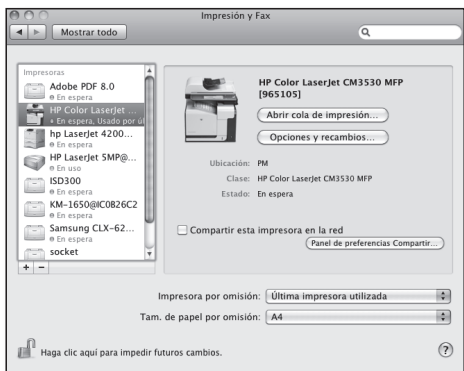


1 Lea y siga las precauciones y ejecute la instalación de hardware, vea: *Hardware Installation Guide*.

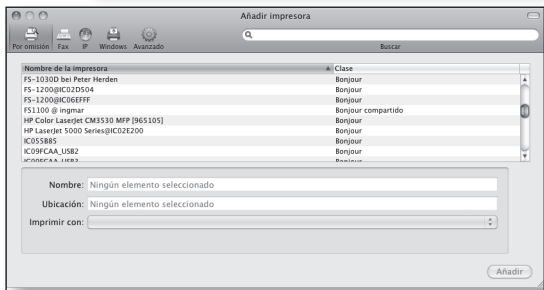


Impresión y Fax

2 Arranque *Impresión y Fax* en el cliente Mac.



3 Haga clic en .



4 Elija la impresora/el servidor de impresión en la lista.

Elija un nombre, una ubicación y un controlador de impresora.

Haga clic en *Añadir*.



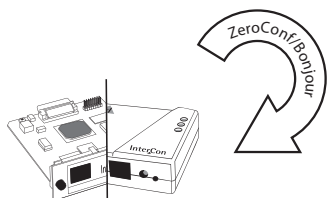
Seleccione las Opciones instalables (cuando sea necesario).

► La impresora y el servidor de impresión se crearán en el cliente Mac y se mostrarán en la lista. Así estarán disponibles las funciones.

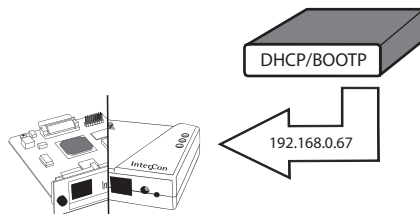
Informaciones acerca de la adjudicación de la dirección IP

Los servidores de impresión de SEH se suministran sin dirección IP. Durante la primera instalación, el servidor de impresión comprueba si recibe una dirección IP a través de los protocolos de arranque BOOTP o DHCP. Si no fuera así, el servidor de impresión se asigna, a través de ZeroConf, una dirección IP del rango de direcciones reservadas para ZeroConf (169.254.0.0/16). En caso necesario, se puede guardar manualmente una dirección IP definible en el servidor de impresión.

Adjudicación automática de la dirección IP

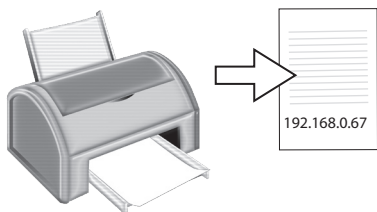


El servidor de impresión se asigna, a través de ZeroConf, una dirección IP del rango 169.254.0.0/16.



Si los protocolos de arranque están activados (configuración de fábrica) y si hay un servidor DHCP en la red, el servidor de impresión recibe su dirección IP a través del servidor DHCP.

Ver la dirección IP



La dirección IP se encuentra en la página de estado del servidor de impresión.

Pulsar la tecla de estado en el servidor de impresión para imprimir la página de estado.

Adjudicación manual de la dirección IP

- 1 Inicie el *Product CD* en el cliente.
- 2 Elija el menú *Print Server – Tools*.
- 3 Instale el *InterCon-NetTool* en el cliente. Inicie la rutina de instalación.
- 4 Arranque el *InterCon-NetTool* en el cliente.
- 5 Elija el servidor de impresión en la lista y arranque el *Asistente IP*.
- 6 Siga las instrucciones del *Asistente IP*. Introduzca la dirección IP preferida y guárdela.

Informaciones acerca de la administración del servidor de impresión

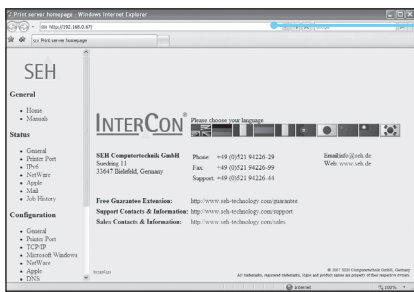


Administración mediante la Homepage del servidor de impresión

1 Inicie el software del explorador de Web en el cliente.

2 Introduzca la dirección IP del servidor de impresión como URL.

3 Se mostrará la Homepage del servidor de impresión. Ejecute la acción que desee.



Administración mediante el InterCon-NetTool

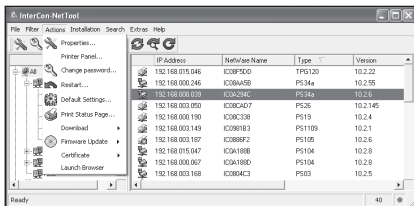
1 Inicie el Product CD en el cliente.

2 Elija el menú Print Server – Tools.

3 Instale el InterCon-NetTool en el cliente. Inicie la rutina de instalación.

4 Arranque el InterCon-NetTool en el cliente.

5 Elija el servidor de impresión en la lista y ejecute la acción que desee.



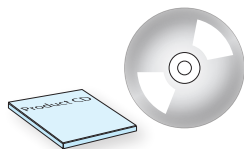
Informazioni sulla funzionalità veloce – Stampare in Windows –



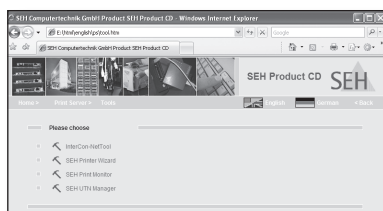
Il server di stampa e il cliente devono trovarsi nello stesso segmento di rete locale.



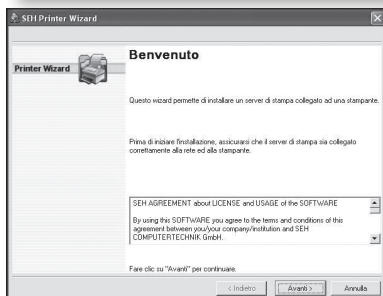
1 Leggere e osservare le istruzioni di sicurezza e eseguire l'installazione hardware, vedi: *Hardware Installation Guide*.



2 Avviare il *Product CD* sul cliente Windows.



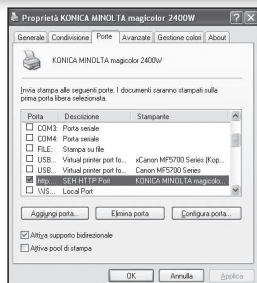
3 Selezionare il menu *Print Server – Tools*.



4 Avviare l'installazione guidata stampante (*SEH Printer Wizard*). Seguire le istruzioni dell'installazione guidata stampante.



Il SEH Printer Wizard supporta sistemi a 32 bit. Per l'installazione del server di stampa in un sistema a 64 bit, utilizzare la installazione stampante predefinita di Windows. Contattare il produttore di vostro sistema operativo per ulteriori informazioni.



► La stampante e il server di stampa vengono creati come oggetti di stampa nel cliente Windows e visualizzati nelle *Proprietà stampante*. La funzionalità è attiva.

Informazioni sulla funzionalità veloce – Stampare in Mac OS X –



Il server di stampa e il cliente devono trovarsi nello stesso segmento di rete locale.

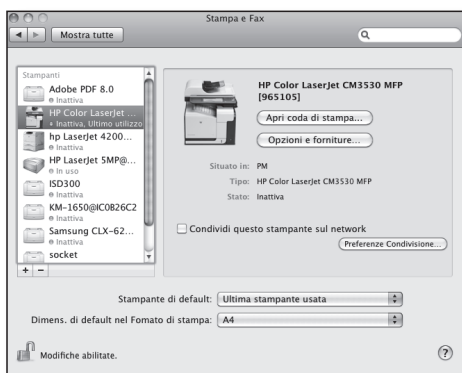


1 Leggere e osservare le istruzioni di sicurezza e eseguire l'installazione hardware, vedi: *Hardware Installation Guide*.

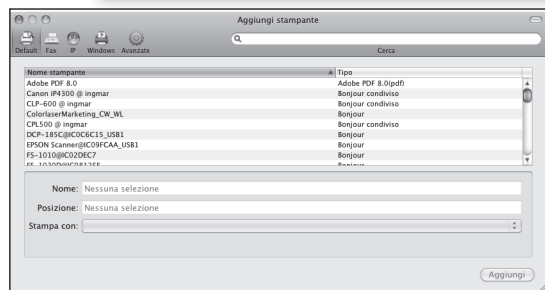


Stampa e Fax

2 Avviare *Stampa e Fax* sul cliente Mac.



3 Fare clic su .



4 Selezionare la stampante/il server di stampa nella lista.

Immettere un nome, una posizione ed un driver di stampa.

Fare clic su *Aggiungi*.



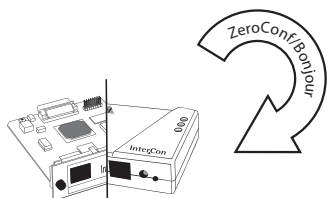
Definire le Opzioni Installabili (se necessario).

► La stampante e il server di stampa vengono creati sul cliente Mac e visualizzati nell'elenco. La funzionalità è attiva.

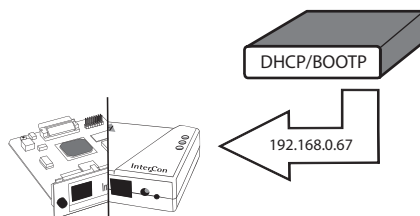
Informazioni sull'assegnazione dell'indirizzo IP

I server di stampa SEH vengono consegnati senza indirizzo IP. Durante l'installazione iniziale, il server di stampa attende la ricezione dell'indirizzo IP dai protocolli BOOTP o DHCP. In caso contrario, il server si assegna autonomamente attraverso ZeroConf un indirizzo IP compreso nell'intervallo riservato a ZeroConf (169.254.0.0/16). Se necessario è possibile salvare manualmente un qualsiasi indirizzo IP nel server di stampa.

Assegnazione automatica dell'indirizzo IP

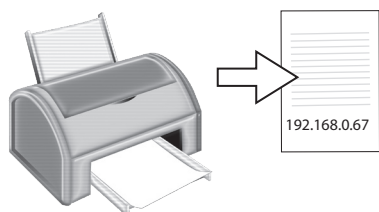


Il server si assegna autonomamente attraverso ZeroConf un indirizzo IP compreso nell'intervallo riservato a ZeroConf (169.254.0.0/16).



Se i protocolli di boot sono attivati (impostazioni di fabbrica) e se nella rete è presente un server DHCP, il server di stampa riceverà l'indirizzo IP dal server DHCP.

Vedere l'indirizzo IP



L'indirizzo IP si trova sulla pagina di stato del server di stampa.

Per stampare una pagina di stato, premere il pulsante di stato del server di stampa.

Assegnazione manuale dell'indirizzo IP

- 1 Avviare il *Product CD* sul cliente.
- 2 Selezionare il menu *Print Server – Tools*.
- 3 Installare il *InterCon-NetTool* sul cliente. Avviare la routine d'installazione.
- 4 Avviare il *InterCon-NetTool* sul cliente.
- 5 Selezionare il server di stampa nella lista ed avviare il *Wizard IP*.
- 6 Seguire le istruzioni del *Wizard IP*. Digitare l'indirizzo IP desiderato, quindi salvarlo.

Informazioni sull'amministrazione del server di stampa



Internet Explorer.exe



Safari.app



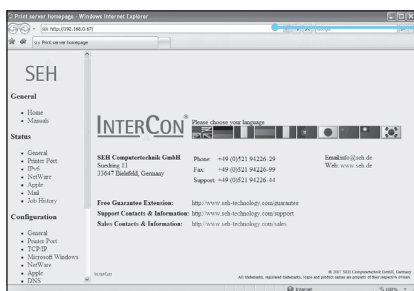
Firefox.exe

Amministrazione tramite la Homepage del server di stampa

1 Avviare il software del browser Web sul cliente.

2 Immettere l'indirizzo IP del server di stampa come URL.

3 Verrà visualizzata la *Homepage del server di stampa*. Eseguire l'operazione desiderata.



Amministrazione tramite il InterCon-NetTool

1 Avviare il *Product CD* sul cliente.

2 Selezionare il menu *Print Server – Tools*.

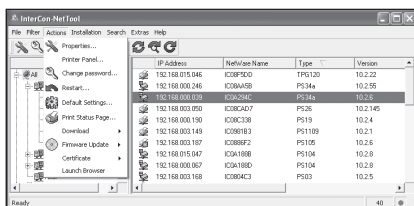
3 Installare il *InterCon-NetTool* sul cliente. Avviare la routine d'installazione.

4 Avviare il *InterCon-NetTool* sul cliente.

5 Selezionare il server di stampa nella lista ed eseguire l'operazione desiderata.



SEH
InterCon-NetTool.exe



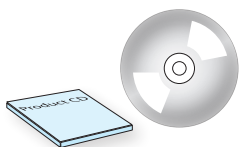
Informações para obter rapidamente a operacionalidade – Imprimir em Windows –



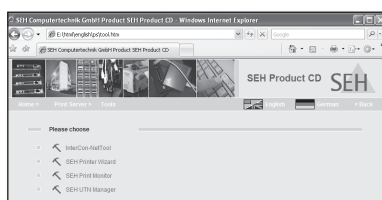
O servidor de impressão e o cliente têm de se encontrar no mesmo segmento de rede local.



1 Leia e observe os avisos de segurança e execute a instalação do hardware, ver: *Hardware Installation Guide*.



2 Inicie o *Product CD* no cliente Windows.



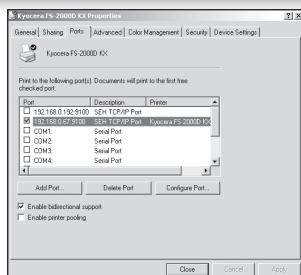
3 Seleccione o menu *Print Server – Tools*.



4 Inicie o *Assistente da Impressora (SEH Printer Wizard)*. Siga as instruções do *Assistente da Impressora*.



O SEH Printer Wizard suporta sistemas de 32 bits. Se deseja instalar o servidor de impressão em um sistema de 64 bits, use a instalação de impressora predefinida de Windows. Contacte o fabricante de seu sistema operativo para mais informações.



► A impressora e o servidor de impressão são instalados no cliente Windows como objectos de impressão e exibidos no diálogo do Propriedades de impressão. Assim, a operacionalidade foi realizada.

Informações para obter rapidamente a operacionalidade – Imprimir em Mac OS X –



O servidor de impressão e o cliente têm de se encontrar no mesmo segmento de rede local.



1 Leia e observe os avisos de segurança e execute a instalação do hardware, ver: *Hardware Installation Guide*.

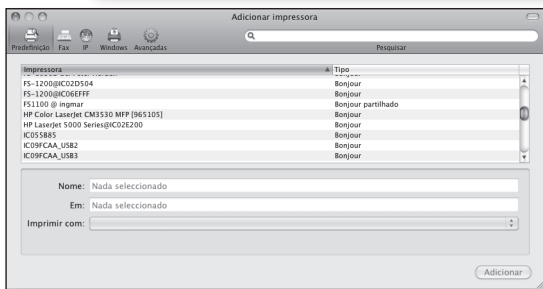


Impressão e Fax

2 Inicialize *Impressão e Fax* no cliente Mac.



3 Clique no botão .



4 Selecione a impressora/o servidor de impressão na lista.

Introduza um nome, uma localização e um driver de impressão.

Clique no botão *Adicionar*.



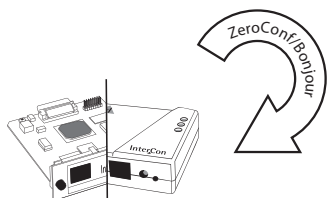
Configure as *Opções Instaláveis* (se necessário).

▶ A impressora e o servidor de impressão são instalados no cliente Mac e exibidos na lista. Assim, a operacionalidade foi realizada.

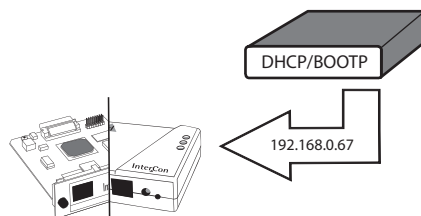
Informações sobre a atribuição do endereço IP

Os servidores de impressão SEH são fornecidos sem endereço IP. Na primeira instalação, o servidor de impressão verifica se obtém um endereço IP através do protocolo de arranque BOOTP ou DHCP. Caso contrário, o servidor de impressão fornece através do próprio ZeroConf um endereço IP dentro do âmbito de endereços reservado para o ZeroConf (169.254.0.0/16). Se necessário, pode ser guardado um endereço IP manualmente de definição livre no servidor de impressão.

Atribuição automática do endereço IP

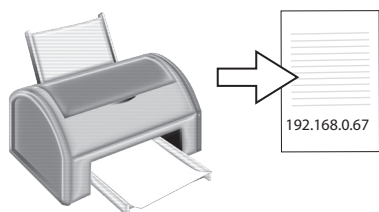


O servidor de impressão fornece através do próprio ZeroConf um endereço IP dentro do âmbito de endereços reservado para o ZeroConf (169.254.0.0/16).



Caso os protocolos de arranque estejam activados (configuração de fábrica) e caso exista um servidor DHCP na rede, o servidor de impressão recebe o seu endereço IP através do servidor DHCP.

Visualização do endereço IP



O endereço IP encontra-se na página de estado do servidor de impressão.

Carregar na tecla de estado do servidor de impressão para imprimir a página de estado.

Atribuição manual do endereço IP

- 1 Inicie o *Product CD* no cliente.
- 2 Seleccione o menu *Print Server – Tools*.
- 3 Instale a *InterCon-NetTool* no cliente. Inicie a rotina de instalação.
- 4 Inicialize a *InterCon-NetTool* no cliente.
- 5 Seleccione o servidor de impressão na lista e inicie o *Assistente do IP*.
- 6 Siga as instruções do *Assistente do IP*. Introduza o endereço IP pretendido e grave-o.

Informações acerca da administração do servidor de impressão



Internet Explorer.exe



Safari.app



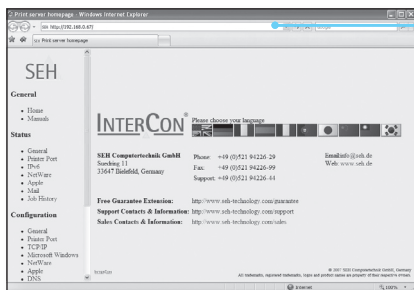
Firefox.exe

Administração através a Homepage do servidor de impressão

1 Inicialize o software de browser no cliente.

2 Introduza o endereço IP do servidor de impressão como URL.

3 A *Homepage do servidor de impressão* é exibida. Execute a acção pretendida.



Administração através o InterCon-NetTool

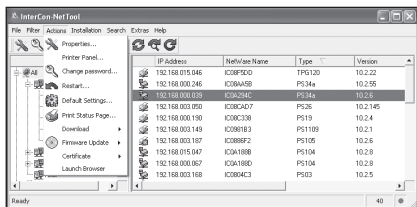
1 Inicie o *Product CD* no cliente.

2 Selecciono o menu *Print Server – Tools*.

3 Instale a *InterCon-NetTool* no cliente. Inicie a rotina de instalação.

4 Inicialize a *InterCon-NetTool* no cliente.

5 Selecciono o servidor de impressão na lista e execute a acção pretendida.



SEH COMPUTERTECHNIK GmbH
Germany (Headquarters)

Südring 11
33647 Bielefeld
Deutschland

Telefon +49 (0) 5 21 - 9 42 26-29
Fax +49 (0) 5 21 - 9 42 26-99
Support +49 (0) 5 21 - 9 42 26-44

Internet www.seh.de
E-Mail info@seh.de

SEH TECHNOLOGY UK LTD.
United Kingdom/Ireland

The Sussex Innovation Centre,
Science Park Square, Falmer,
Brighton, BN1 9SB, Great Britain

Phone +44 (0) 12 73 - 23 46-81
Fax +44 (0) 12 73 - 23 46-82

Internet www.seh-technology.co.uk
Email info@seh-technology.co.uk

SEH TECHNOLOGY Inc.
USA

518 Kimberton Rd. / PMB 410
Phoenixville, PA 19460
USA

Phone +1 610 - 9 33-20 88
Fax +1 484 - 2 29-06 97

Internet www.seh-technology.com
Email info@seh-technology.com

