



## **SEH Hardware Solutions for ThinPrint Environments and Personal Printing**

**ThinPrint Gateways  
ThinPrint Reader**

## ThinPrint Gateways

Based on the proven ThinPrint technology there is already the second generation of ThinPrint Gateways on the market. The TPG-25 connects up to two network printers for bandwidth optimized printing, the TPG-65 attaches up to six printers, and the TPG-125 attaches up to twelve printers.



Regardless of printer manufacturer and network environment, the ThinPrint Gateways are the perfect solution for all ThinPrint installations.

With the integrated ThinPrint client and additional features such as backup parameters and print job buffering, TPG-25, TPG-65 and TPG-125 also save more money: maintenance, safe and energy saving are just some of the properties that the ThinPrint Gateways offer in this context.

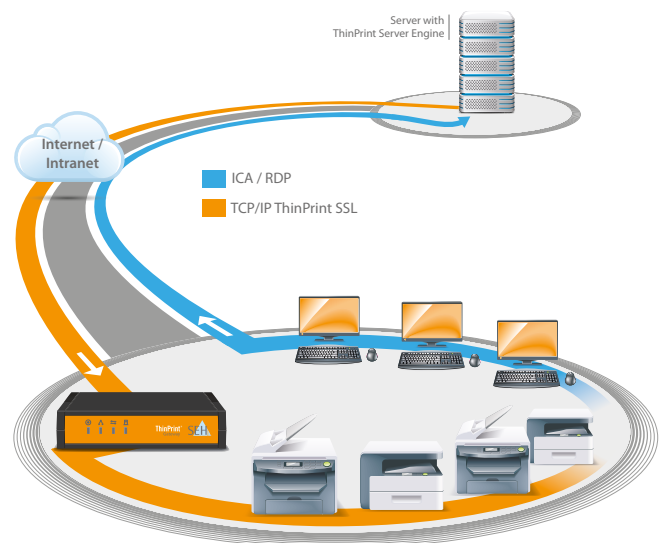
Of course they also support ThinPrint AutoConnect and ThinPrint Connection Services and more!

If customers want to include more than twelve printers in a ThinPrint environment, SEH also offers scalable solutions for as many printers as required. All SEH print servers and the dedicated Print Spool Appliances from the Intelligent Spooling Device range offer an integrated ThinPrint client.



## ThinPrint Gateways Features

- Optimized bandwidth utilization and decompression of print jobs, ensuring application performance and reducing data transfer time
- Additional features, such as backup parameters and print job buffering
- Low costs per printer (TCO)
- Easy configuration, administration, and management via TPG Control Center or SEH InterCon NetTool
- Quick and easy installation with ThinPrint AutoConnect and ThinPrint Connection Services



## Personal Printing with Contactless RFID Card Technology

Especially for Personal Printing SEH and Cortado offer the ThinPrint Reader TPR-10. Based on the contactless RFID card technology, print jobs are initiated with only a swipe of a card on the TPR-10



The ThinPrintReader is printer manufacturer-independent and can be installed transparently between the printer and the network. This type of integration does not interfere with existing infrastructure, such as output monitoring systems.

Also, the ThinPrint Reader has an integrated ThinPrint Client as well as additional features such as backup parameters and print job buffering.

The contactless RFID technology supports a range of smart cards (e.g. MIFARE, FeliCa, etc.) and their standards (e.g. ISO 14443). Smart cards already in use in the enterprise, for time registration and/or access systems, can be used for Personal Printing with the ThinPrint Reader. The TPR-10 comes with five matching RFID smart cards. Additional RFID smart cards and optional RFID tags are also available

### ThinPrint Reader TPR-10 Features

- Contactless card technology
- TPR-10 does not interfere with existing network infrastructure, such as output or monitoring systems, because it is independently connected to the printer
- TPR-10 is manufacturer-independent, i.e., every network printer can become a Personal Printer
- Independent of the operating system use
- Existing company Smart-Cards (e.g., for time registration and/or access systems) can be used for Personal Printing with the TPR-10
- Comprehensive security package: Encryption, Port-Blocking, IP-Sender-Protection, etc.



## Overview SEH Products for ThinPrint Environments:

<b>ThinPrint Gateway TPG-25</b>	for up to 2 printers	Order Numbers: M03870 (EU), M03871 (UK), M03872 (US), M03873 (JP), M03874 (AUS)
<b>ThinPrint Gateway TPG-65</b>	for up to 6 printers	Order Numbers: M03880 (EU), M03881 (UK), M03882 (US), M03883 (JP), M03884 (AUS)
<b>ThinPrint Gateway TPG-125</b>	for up to 12 printers	Order Numbers: M03890 (EU), M03891 (UK), M03892 (US), M03893 (JP), M03894 (AUS)
<b>ThinPrint Reader TPR-10</b>	Personal Printing	Order Numbers: M03810 (EU), M03811 (UK), M03812 (US), M03813 (JP), M03814 (AUS)

## Special Printing Solutions with Integrated ThinPrint Gateway:

Intelligent Spooling Device ISD300	for up to 50 printers	Order Numbers: M03710 (EU), M03711 (UK), M03712 (US)
Intelligent Spooling Device ISD410	for up to 150 printers	Order Number: M03780

For more information about the Intelligent Spooling Devices please go to  
<http://www.seh-technology.com/products/print-spool-appliances.html>

Each SEH print server has already an integrated Thin Client!

For more information about SEH print servers, please go to  
<http://www.seh-technology.com/products/print-server-external.html>