



TPG-125

The New Generation

The ThinPrint Gateway TPG-125 is specifically designed for environments with implemented ThinPrint technology.

The TPG-125 connects up to twelve network printers for bandwidth optimized printing. This allows for perfectly scalable network printer connections in ThinPrint environments.

The ThinPrint Gateway comes with many innovations in terms of maintenance, administration and security, all of which simplify the daily work routine significantly. The ThinPrint Gateway is equipped with a parameter backup feature, for instance. You

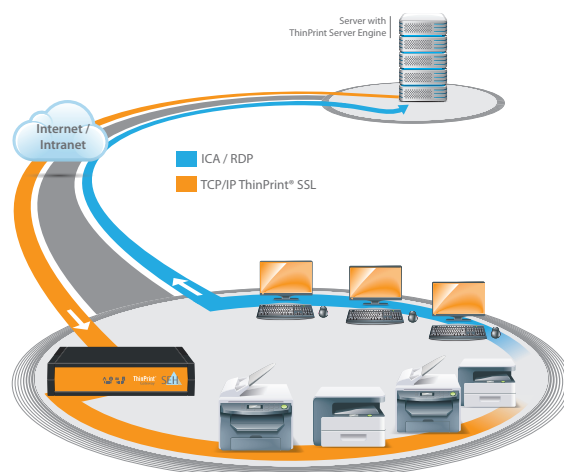
can quickly and easily secure all parameters within an optional USB stick*. If required, you can simply load these parameters into another device. In addition, the ThinPrint Gateway has an e-mail notification feature. Stay up to date by receiving status reports and precise error messages directly from the TPG-125. This feature also allows for convenient remote maintenance via email.

Details make all the Difference

Another feature which actively supports smooth operation: With print job buffering, print data is temporarily stored on a USB flash drive* if a printer is not ready for printing. As soon as the printer is ready to go, the TPG-125 automatically sends the buffered print job.

It goes without saying that a comprehensive security package is included as well: the ThinPrint Gateway supports end-to-end encryption and much more.

Our ThinPrint Gateway is the perfect complement for ThinPrint environments—see for yourself!



Benefits

- Optimized bandwidth usage and decompression of print jobs ensure the application performance and reduce the data transfer time
- Additional features such as parameter backup and print job buffering

- Low costs per printer (total cost of ownership)
- Easy configuration, administration and management via the TPG Control Center or the SEH InterCon-NetTool
- Fast and easy installation via ThinPrint AutoConnect and ThinPrint Connection Services

Typical Fields of Application

- For all network environments with implemented ThinPrint technology
- Branch and field offices
- WANs with narrow bandwidth lease lines or dial-up connections
- Server-based computing environments (Citrix XenApp and Microsoft Remote Desktop Services/Terminal Services)
- Virtualized environments (VMware, Citrix XenDesktop or server virtualization)

Features

- Integrated ThinPrint client
- For up to twelve (TPG-125) network printers in ThinPrint environments
- independent of the printer manufacturer
- Print job buffering
- E-mail notification (printer error messages, status reports, etc.)
- Parameter backup
- End-to-end encryption

ThinPrint support

- ThinPrint Client
- SSL printing
- AutoConnect support
- Connection Service support
- For up to 12 (TPG-125) network printers

Interfaces and Network Connectors

- 1 × 10BaseT/100BaseTX/1000BaseT
- 1 × USB 2.0 Hi-Speed

Configuration and Management

- SEH InterCon-NetTool for Windows, Linux, OS X/macOS
- TPG Web Control Center (monitoring, configuration, administration, firmware update)
- Email, SNMP, SNMP MIB 2 compatible, SNMPv1, SNMPv3, Bonjour

Supported Operating Systems

- independent of operating system

Supported Protocols

- IPv6 support
- TCP/IP:
DHCP, BOOTP, ARP, TCP, UDP, ICMP, IGMP, TFTP, HTTP/HTTPS, Zeroconf, DNS, SLP, SNMPv1, SNMPv3, SMTP, POP3, SSL/TLS, IPPv1.0, IPPv1.1, RawTCP, Bonjour, etc.
- Windows:
SMB/CIFS (NetBIOS over TCP/IP), WINS, etc.

Security

- Encryption: SSL 3.0–TLS 1.2, HTTPS, FTPS
- Authentication: 802.1X (EAP-MD5, EAP-TLS, EAP-FAST, EAP-TTLS, PEAP)
- Access control
- Certificate management: selfsigned certificate, certificate request, CA certificate, PKCS#12 certificate, S/MIME certificate
- Device and port access control

Printing Protocols and Methods

- Socket (RAW) printing
- LPR/LPD printing
- IPP v1.1 printing, IPP secure printing

Supported Languages

- English, German, French, Spanish, Italian, Portuguese, Japanese, Korean, Chinese (traditional and simplified)

Tests (Notifications)

- CE: EN55022 Class B, EN55024, EN62301
- FCC class A
- VCCI class A
- RCM (formerly C-TICK)
- ROHS

Power Supply

- External Power Supply
Output: 5 V, 2 A
Input: 100–240 V ~

Operating Environment

- Temperature: 5–40 °C
- Relative humidity: 20–80 %

Dimensions (Depth, Width, Height)

- 99 × 140 × 32 mm

Weight

- 120 g

Order Numbers

- M03890 – TPG-125 (EU)
- M03891 – TPG-125 (UK)
- M03893 – TPG-125 (JP)
- M03894 – TPG-125 (AUS)



SEH Computertechnik GmbH

Suedring 11
33647 Bielefeld
Deutschland

Phone +49 (0) 5 21 9 42 26-29
Fax +49 (0) 5 21 9 42 26-99
Support +49 (0) 5 21 9 42 26-44
Internet www.seh-technology.com
Email info@seh-technology.com



ThinPrint GmbH

Alt-Moabit 91 a/b
10559 Berlin
Deutschland

Phone +49 (0) 30 39 49 31-0
Fax +49 (0) 30 39 49 31-99
Internet www.thinprint.com
Email info@thinprint.com

<https://www.seh-technology.com/products/thinprint-gateway.html>

